

# SCG Concrete Roof NeuStile X-Shield HeatBLOCK

LIVE MODERN  
LIVE **NEUSTILE**

**NEUSTILE X-SHIELD  
HEATBLOCK**



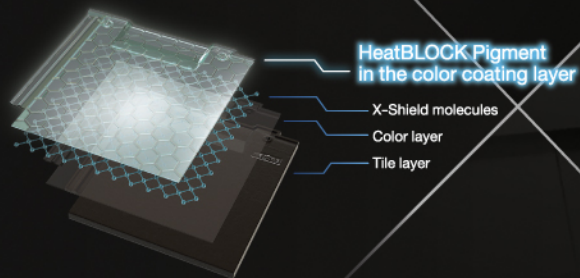


# NEUSTILE X-SHIELD HEATBLOCK



Superior solutions for all definitions of modern style houses with flat concrete roof by High Pressure Pressing Process production technology that reflects a modern and unique image for those who prefer a modern style.

LIVE MODERN  
LIVE NEUSTILE



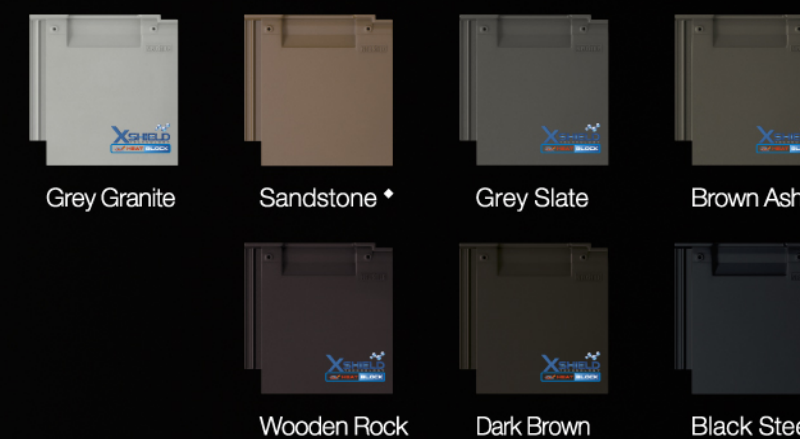
## Superior with innovative thermal radiation reflection on concrete roof panel

- “HeatBLOCK Pigment”, innovative special formula color pigment on the coating layer that reflects thermal radiation 3.5 times\* higher than the previous formula.
- Reduces house temperature, saving electricity costs from air conditioner by up to 15%\*\* (increasing efficiency of thermal radiation reflection when used together with SCG reflective insulation, reducing room temperature by up to 2.2 degrees celsius and saving electricity costs from air conditioner by up to 25%\*\*\*).
- Integrated with “X-Shield Technology” innovative new formula color coating, resulting in 3 times\*\*\*\* more beautiful, durable and long-lasting color.



Trendy flat roof tiles with a wide variety of color shades for a stylish and outstanding flat roof that perfectly fits a modern style home.

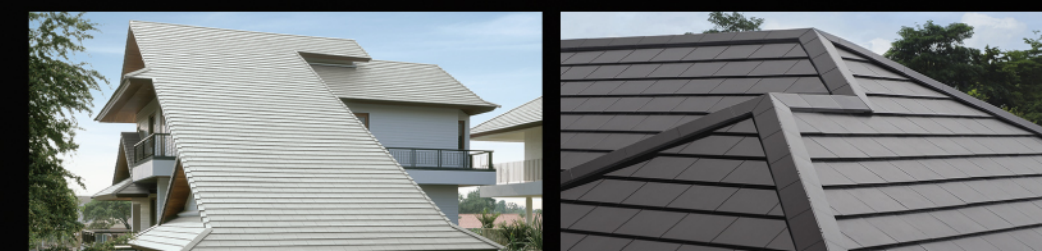
## TREND



## STYLISH



◆ Made-to-order lead time : 45 days



Home owner : Khun Asawin – Khun Ponthida Kangwonkij  
Place : Bangkok  
Color : Grey Granite

Project : Urbana Villagio  
Place : Songkhla Province  
Color : Dark Brown

\* Thermal radiation is measured by considering Near Infrared Reflectance of SCG Neustile concrete roof dark color shade controlled variable (NIR = 8%) compared with Dark Brown (NIR = 27.9%). The measurement is verified by King Mongkut's University of Technology Thonburi.

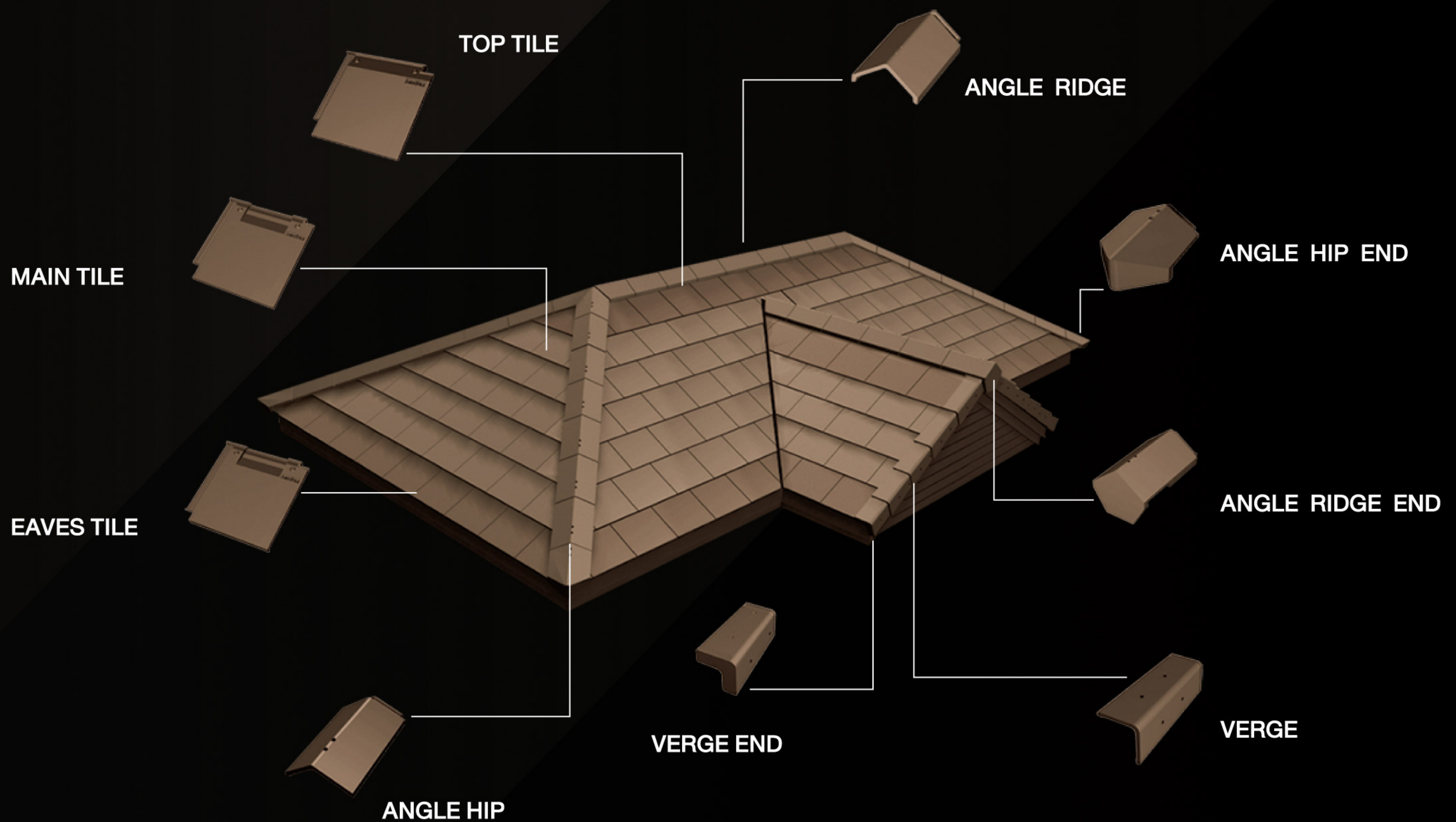
\*\* Comparison between SCG Neustile concrete roof dark color shade controlled variable and Dark Brown is measured from roof installation at Saraburi Roof, Ceiling and Wall Training Center, Nai Chang Dee Institute.

\*\*\* From the test of heat transfer from external ceiling by installing SCG Reflective Insulation with Smartboard ventilated ceiling board.

\*\*\*\* Based on the comparative test between normal SCG concrete roof tiles and X-Shield using Q.U.V condition acceleration testing process equivalent to ASTM G154 standard by SCG Technology Roof Design Center, X-Shield is 3 times more resistant to the environment than the original one.



# NEUSTILE X-SHIELD HEATBLOCK



## Specifications (Approximate)

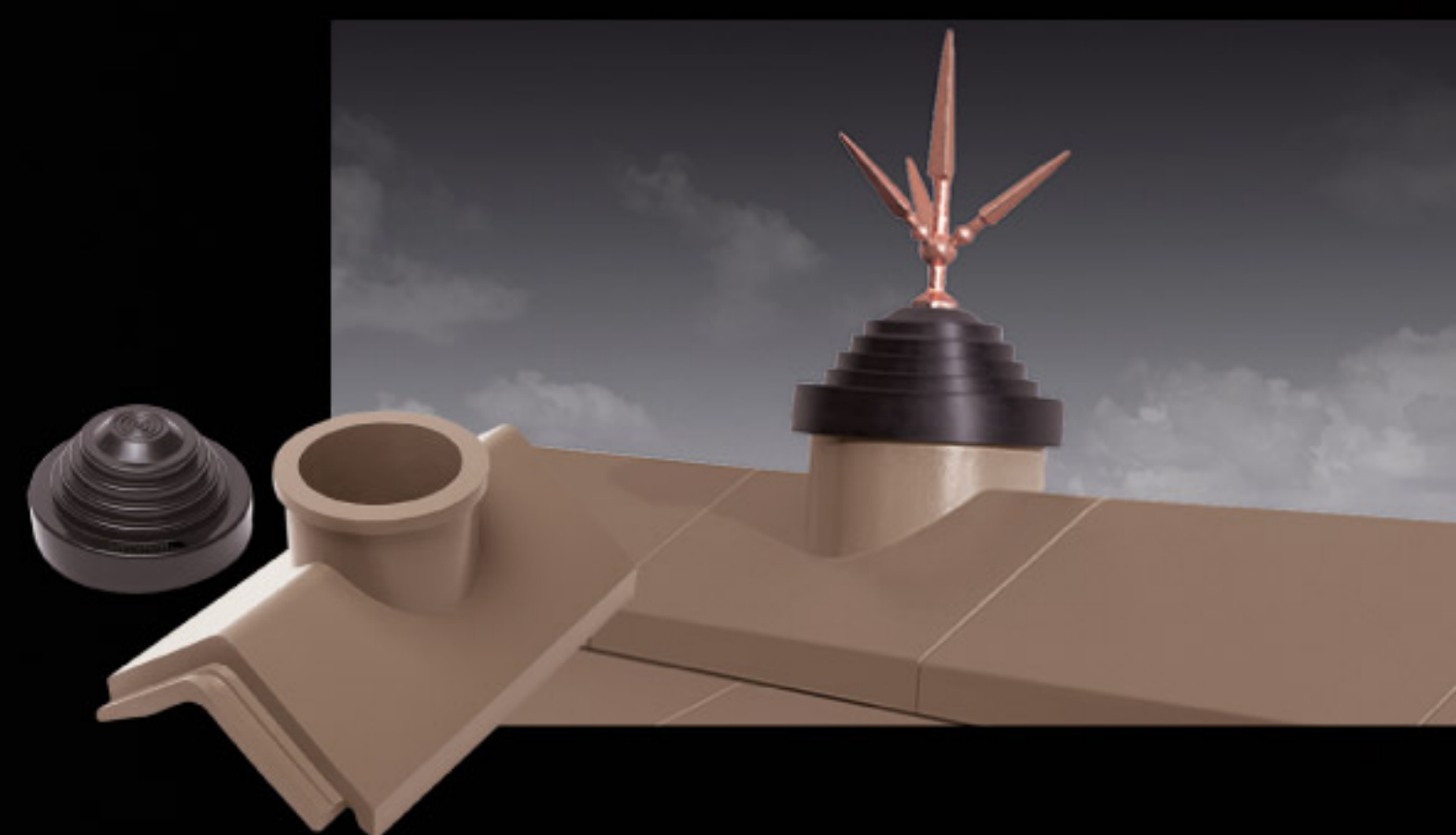
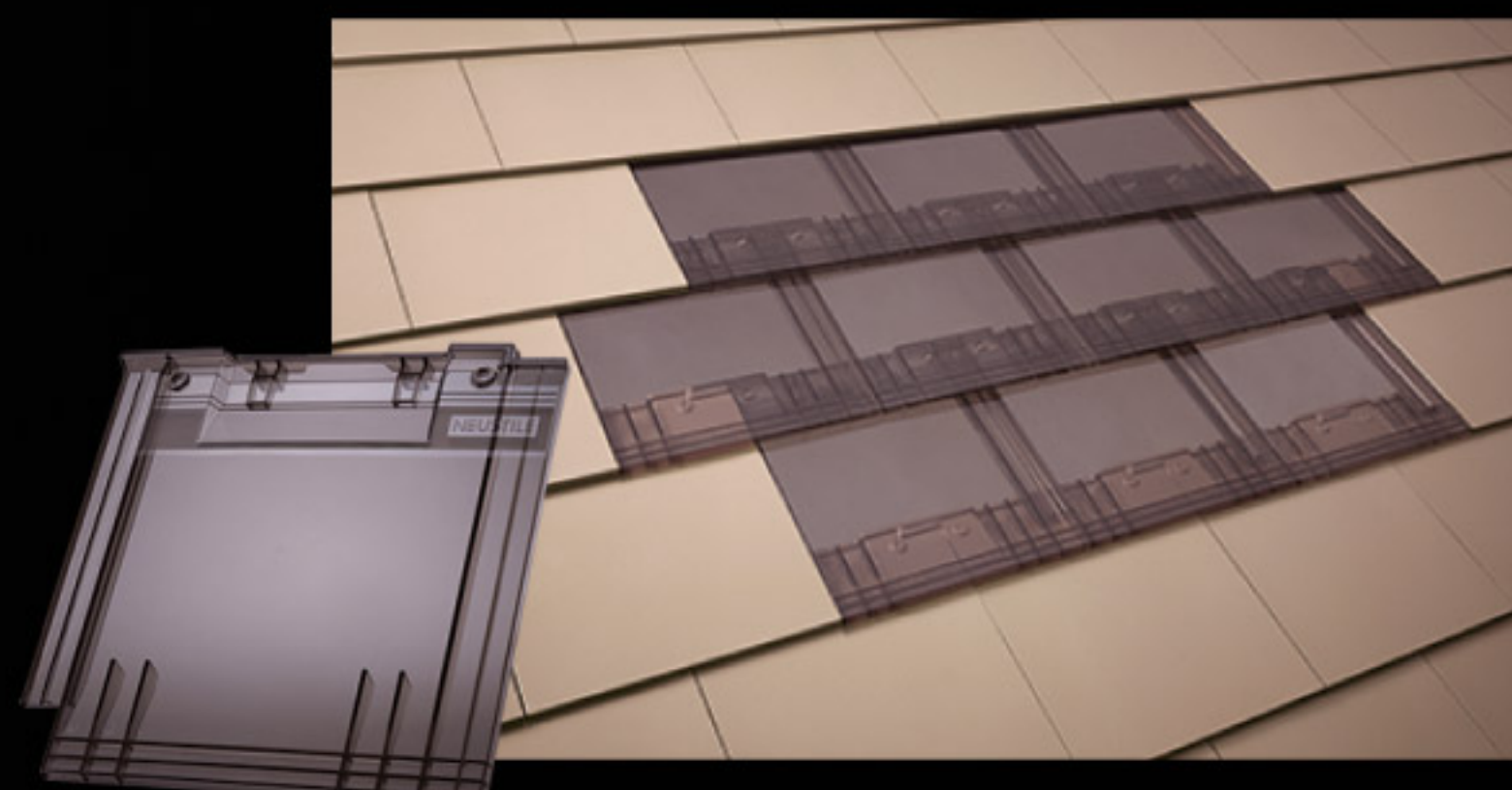
|   |       |         |
|---|-------|---------|
| Tile size per unit                            | 40x40 | cm      |
| Minimum roof slope                            | 22.5  | degrees |
| Maximum roof slope                            | 45    | degrees |
| Min. batten space/Max. overlap with tile head | 27/13 | cm      |
| Max. batten space/Min. overlap with tile head | 29/11 | cm      |
| Net width of tile after overlapping           | 35.4  | cm      |

## Quantity of use (Approximate)

|                             |     |                      |
|-----------------------------|-----|----------------------|
| Main Tile                   | 10  | tiles/m <sup>2</sup> |
| Top Tile per ridge length   | 2.8 | tiles/m              |
| Eaves Tile per eaves length | 2.8 | tiles/m              |

## Tile weight (Approximate)

|            |     |                   |
|------------|-----|-------------------|
| Main Tile  | 5.6 | kg/tile           |
| Top Tile   | 5.6 | kg/tile           |
| Eaves Tile | 6.0 | kg/tile           |
| Dead load  | 56  | kg/m <sup>2</sup> |



## Minimum Fixing

Fixing tiles with 2 of 2-inch self-drilling screws with SCG Batten for all tiles and rows (tile fixing method used should comply with the company's standard).

## **i** Safety practice

• Concrete tiles and fittings are designed for pitched roof (roof with fixed angle of elevation without curves, e.g. gable roof, hip roof, or mixed gable and hip roof) with the angle of elevation that complies with the requirements of each type of tiles according to the "installation manual" only • Please refer to the "installation manual" and follow strictly. In case the roof is not a pitched roof, please consult the company's officer. • Please strictly follow the "standard manual for loading, transporting, and piling products" to prevent possible hazards. • Concrete roof surface is slippery and steep. Do not step on the roof unnecessarily. If necessary, it should be done by a skilled technician with personal protective equipment, e.g. safety belt and life line to prevent possible hazards. • Do not step on the roof when the surface is wet or while raining to prevent falling from the roof. • Do not use heat insulation form under the roof tiles as it will affect efficiency later on.

MHB-S-R12-C002-6106

\* Product conditions may be changed or black stains may appear depending on weather conditions and environment.

\*\* Product color in the images is for advertising and may be different from the real product color due to the printing system. Please consider the real product color at the store before ordering.

All content, design, and layout are Copyright © 2017, SCG Cement-Building Materials All Rights Reserved, Reproduction in whole or part in any form or medium without specific written permission is prohibited.



Available at SCG Authorized Dealer and leading building materials stores

SCG Contact Center 02-586-2222

Email : contact@scg.com, www.scgbuildingmaterials.com