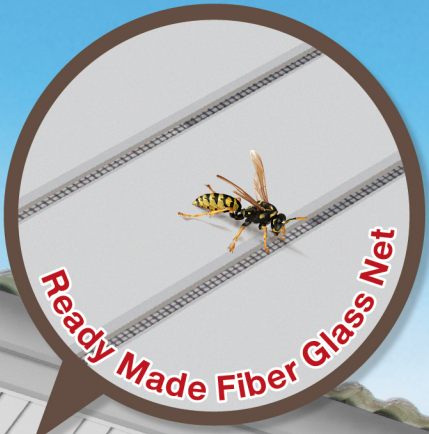




SCG PREFAB EAVES LINER SMART SOFFIT SERIES

Cement Color



Smart Soffit size 60 x 100 x 0.8 cm

SCG Smart Soffit is easier and three times faster to install.

Prefab soffits come with soffit accessories that are prompt and convenient.

Cooler house without worries

because of ventilated lining that equipped with fiber glass net to protect bugs.

Flawless work with natural wood like.

Beautiful and neat without screw so that there's no need to do the finishing work.

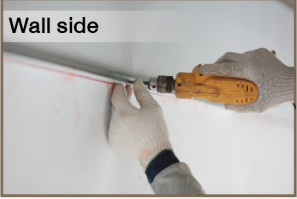
Yet, it contains natural look like real wood.




SCG Prefab Eaves Liner, **Smart Soffit Series**

New standard of soffit with prefab eaves liner innovative system from SCG reduces half of the installation process saving three times the working time. It is combined with standard prefab soffit built by the factory with ventilated lining and high quality fiber glass insect net. It is durable for more than 100°C as well as water and humid resistant. Easy to install using general tools. Comes with prompt accessories and screw-free technique so it's convenient to use, producing beautiful and neat work without finishing process and also look just like real wood.


Installation Guide




Wall side



End of rafter side:



Soffit rail interlocking:




add 22 mm on each side
the length between the lower soffit rail edge

- 1. Install soffit rail for both sides**

Wall Side : Make a hole to insert SCG Plastic Insert 37 mm every 30 cm and secure soffit rail with SCG Needle Point Screw 38 mm.
End of rafter side : Secure soffit rail with rail hanging square following rafter line. Then, attach soffit rail with rafter using SCG Self Drilling Screw 13 mm at 2 spots
Soffit rail interlocking : Only on the end of rafter side, using steel plate and secure with SCG Self Drilling Screw 13 mm at 4 spots.


Remark : Soffit rail should be painted with oil paint before installation
- 2. Cut Smart Soffit in to the preferred size**

Measure the length according to lower soffit rail edge and add 22 mm on each side (if you measure from upper rail edge, add 5 mm on each side) to perfectly secure it with soffit rail.



3. To paint Smart Soffit

Seal it with substrate primer paint before painting with SCG Acrylic Paint for wood plank in preferred shade. Leave to dry.



4. To install Smart Soffit

Attach Smart Soffit with frame by putting Smart Soffit in the rafter side first. Then, insert Smart Soffit into soffit rail of the wall side and push the other side down into soffit rail of rafter side. Adjust to center both sides. To make a better sealing installation, fill gap between Smart Soffit and upper soffit rail with 15 mm backing rod.

Additional advice :
In case that width of the eave is over 60 cm, install level adjustment tool by attaching it between rafter and the center of each soffit.

Remark : level adjustment tool is not included in the SCG Smart Soffit accessory set.

SCG SMART SOFFIT accessory set

Product	Accessories			
 <p>SCG Smart Soffit 60 x 100 x 0.8 cm One piece can be installed on 0.6 sq m</p>	 <p>SCG Soffit rail 4 x 2 x 2.3 x 0.08 cm with 2 m length 4 pieces</p>	 <p>SCG rail hanging square 2.3 x 8 x 19.8 x 0.15 cm 5 pieces</p>	 <p>SCG steel plate for soffit rail interlocking 2.3 x 11.4 x 0.15 cm 2 pieces</p>	 <p>SCG Self Drilling Screw 13 mm 45 pieces</p>

- 8 installation accessories = 1 pack
- 24 installation accessories packs = 1 pallet
- 1 pallet contains 60 smart soffits

Remark:

- 1 accessory set can be used to install SCG Smart Soffit Serie for approximately 5 sq.m.
- Backing rod, SCG Plastic Insert 37 mm, SCG Needle Point Screw 38 mm and level adjustment tool are not included in the set.

MHB-S-C12-C002-6104

All content, design, and layout are Copyright © 2018, SCG Cement-Building Materials All Rights Reserved, Reproduction in whole or part in any form or medium without specific written permission is prohibited.

PATENT PENDING



SCG Contact Center 02-586-2222
 Email : contact@scg.com, www.scgbuildingmaterials.com